

B

Venting EZ Boss-Lock Cam & Groove

Application

- Transfer of fluids and solids, with a safe disconnection

Sizes

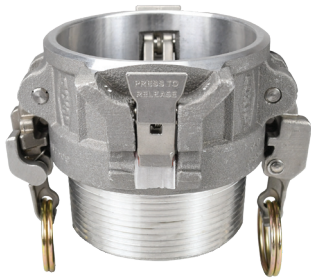
- 2", 3", and 4"

Features

- In the event of an accidental disconnection under pressure, the venting feature retains the coupling and allows the stored pressure to vent off
- Provides a venting feature when used with standard cam adapters
- The safety venting feature of this coupling doesn't require a special adapter to work as a system

Materials

- 316 stainless steel
- 356T6 aluminum



**Type B Coupler
Coupler x Male NPT**

Size	356T6 Aluminum Part #	316 Stainless Steel Part #
2"	ALBEZ200	RLBEZ200
3"	ALBEZ300	RLBEZ300
4"	ALBEZ400	RLBEZ400



**Type C Coupler
Coupler x Hose Shank**

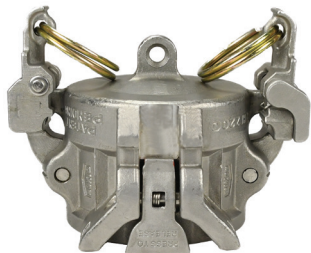
Size	356T6 Aluminum Part #	316 Stainless Steel Part #
2"	ALCEZ200 ¹	RLCEZ200 ¹
3"	ALCEZ300 ¹	RLCEZ300 ¹
4"	ALCEZ400 ¹	RLCEZ400 ¹

¹ Hose drop shank



**Type D Coupler
Coupler x Female NPT**

Size	356T6 Aluminum Part #	316 Stainless Steel Part #
2"	ALDEZ200	RLDEZ200
3"	ALDEZ300	RLDEZ300
4"	ALDEZ400	RLDEZ400



**Type H
Dust Cap**

Size	356T6 Aluminum Part #	316 Stainless Steel Part #
2"	ALHEZ200	RLHEZ200
3"	ALHEZ300	RLHEZ300
4"	ALHEZ400	RLHEZ400