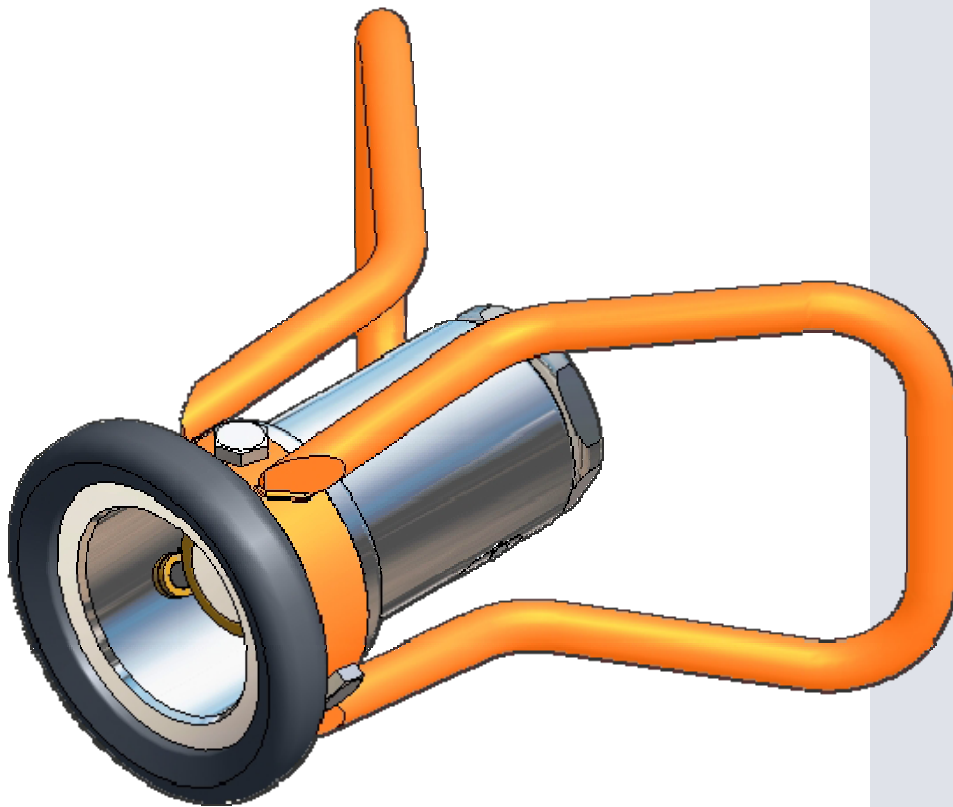




# ***DGCouplings***

***Dry Gas Couplings***



## **Service Instruction**

### **1" Hose Unit**



## **Quality, Health, Safety and Environment Policy**

Our objectives are simple – no accidents, no occupational illness or work related accidents, no negative environmental impact and optimizing and continuously improving customer satisfaction wherever we operate.

Mariestad, February 28 2008

A handwritten signature in blue ink, appearing to read "Tony Mann".  
Tony Mann

### **What does this mean?**

In our daily work to develop, sell, deliver and maintain our products this means to act as soon as we recognize a risk for:

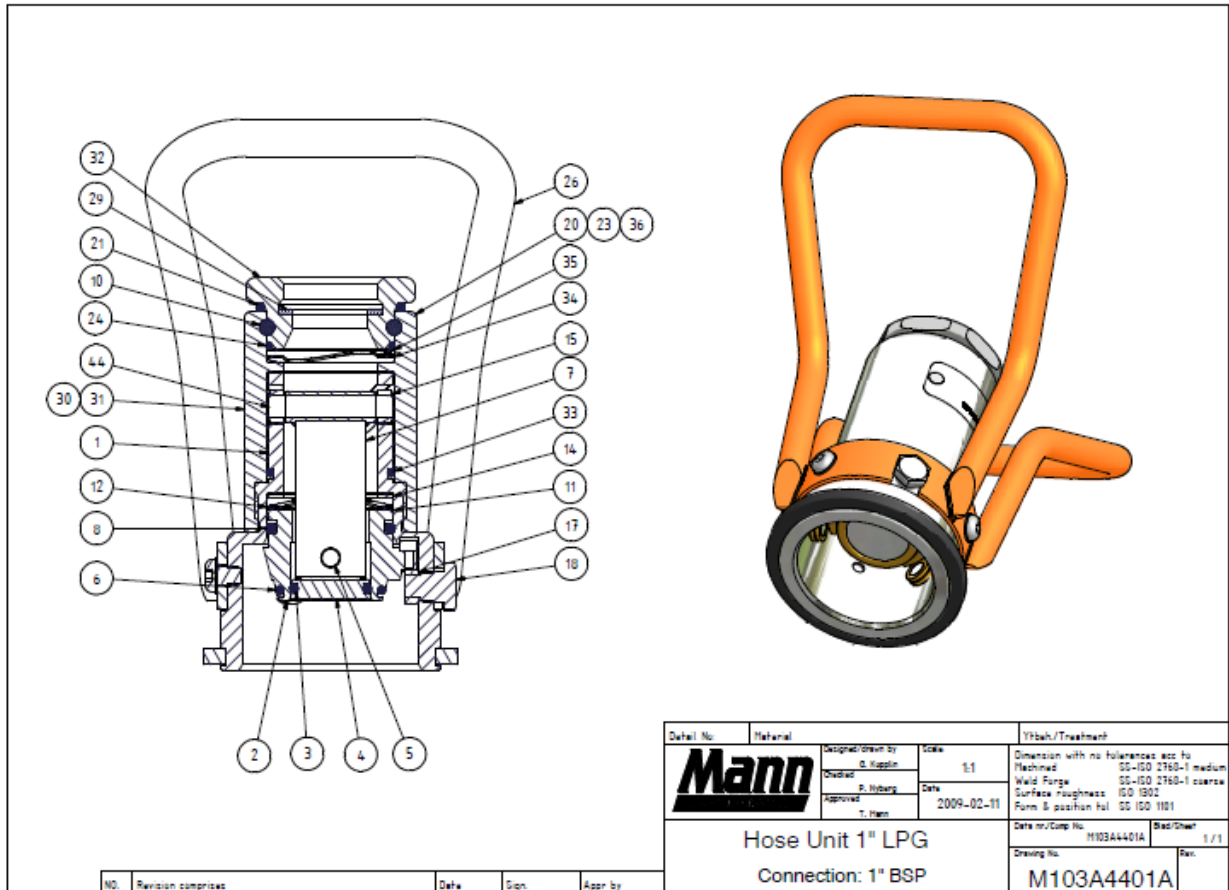
- Delivery of products with insufficient technical quality
- Giving incorrect information
- Not complying with laws and regulations concerning our operation
- Causing negative environmental impact
- Causing occupational illness or accidents
- Not be able to keep promises on delivery terms (product and information)

To act, here means to point out the risk and to make sure we take a balanced decision to prevent what is undesired.

(This policy includes all that is traditionally covered in separate policies for quality, health, safety and environment)

# HOSE UNIT 1"

Material: Al, SS



**Parts needed for service:** Spare part kit and O-ring kit (see p.4)

**Perform a service:** If leaking  
Every year  
Change of media



**Please note!**

Make sure that you are using the right type of O-rings and seals for the media you are using. We are using a standard grease Mann no F1 for standard media, by special media please contact us.

## Maintenance and service instruction



Always depressurise the system and rinse off the parts before beginning any maintenance work. Use protective goggles. Do not handle O-ring seals if the material appears charred, gummy or sticky.



Use tweezers and wear neoprene or PVC gloves. Do not touch adjacent parts with unprotected hands. Rinse off the parts once again before starting the “daily inspection”

## Daily inspection

1. Inspect the coupling surface for cleanliness and corrosion.
2. Inspect the O-ring in the house unit connection for serviceability and correct seating in the groove.
3. Inspect the hose unit swivel for free rotation.
4. Inspect the tank- and hose unit for faultlessness and external signs of seizure.

## Three-month inspection

1. Exterior cleaning of the coupling halves with a neutral cleanser.
2. Careful “daily inspection” of cleaned units.

## Once a year

1. Exchange sealing and washer at least once a year.
2. Refill the hose unit ball bearing grooves with grease
3. Replace worn or damaged components. Repair procedures are straightforward and no special tools are required.

Check the state of the connection surface and verify that it is clean before proceeding with the connection.

Couple the repaired unit to a serviceable hose or tank unit as appropriate and check for correct operation of the valve actuating and bayonet locking mechanism. Couple and uncouple the unit(s) several times.

**Use only original Mann Technik spare parts for maintenance.**

Spare part kit (S-M1-xx)

O-ring kit (O-M1-yy)

xx and yy means the material key according to the product catalogue. You will find it also as the 6<sup>th</sup> to 9<sup>th</sup> sign in the serial number (e.g. M103AxxyyA).



**Remove the lock paint.  
Unscrew the lock screw in the  
middle.**

**Tool: Hexagon wrench no. 2**



**Remove the coupling body from the  
swivel sleeve.**



**Remove the two rollers and the  
rolling shaft from the piston  
guide.**



**Press down the piston and turn the driving plate to the position where the recess ends up under the rollers.**

**Tool: Polygrip plier**



**Remove the driving plate packet from the body.**



**Change the O-ring (pos.33) on the coupling body; use grease on the O-ring.**



**Remove the O-ring and replace with a new O-ring (pos.8). Use grease on the O-ring.**



**Remove the O-ring and replace with a new O-ring (pos.6). Use grease on the O-ring.**



**Remove the O-ring and replace with a new O-ring (pos.3). Use grease on the O-ring.**



**Assemble the driving plate packet with the body.**



**Before the coupling body places on the driving plate packet, make sure that the part where the upper camcurve ends, shall be placed exactly over one roll, and the heel on the riving plate packet should be placed under the hole for the shaft. Press down the piston and press together the driving plate with the roller, so they are in position  
Tools: Arbor, Polygrip plier**



**Put the shafts for piston guide and the rollers in their position in the piston guide.**





**Unscrew the lock screw.**

**Tool: Hexagon wrench no. 3**



**Remove the O-ring from the swivel sleeve.**



**Remove all 26 balls from the swivel sleeve.**



**Remove the swivel half from the swivel sleeve.**



**Change the O-ring (pos.24) to a new one; apply grease on the new O-ring.**



**Drop the balls into the swivel joint, turn the swivel sleeve after each ball.**

**Assemble a new flat seal (pos.29). NPT-thread does not have a flat sealing.**

**Add some grease to the balls and turn the swivel sleeve once again.**



If necessary change O-ring (pos.21) for dust –protection. Use grease on the new O-ring.



Screw together the both parts.



Use Loctite® 243 and screw the lock screw into the swivel ring without any force! Risk to deform the ball bearing!

Apply sealing wax on the top of the lock screw after screwing it in, to prevent misuse.

Finally, make a visual inspection that everything is in its place. Do also a test connection/ disconnection with a tank unit that not has any fluid inside.

If the coupling works all right you are ready to mount the hose unit on your hose again.

Loctite® is registered trademark of Henkel.

## **TEST PROCEDURE**

**Tank- and Hose Unit are tested according to following procedure:**

### **Working Pressure PN 25 (25bar/375 psi)**

Tank- and Hose Unit disconnected

0.2 bar in min. 30 sec. with air under water – no bubbles

6 bar in min. 30 sec with air under water – no bubbles

40 bar in min. 30 sec with water under water – no bubbles

### **Tank- and Hose Unit connected under bending spraying leak finder round the coupling**

0.2 bar in min. 30 sec with air - no sound of leaking air

6 bar in min. 30 sec with air - no sound of leaking air

40 bar in min. 30 sec with water - no bubbles

### **Approved coupling stamps on the piston.**

Number tested: 100%

### **Storage**

Store coupling in a dry, dust free, dark place, in ambient temperature.

© Copyright 2011 Mann Teknik AB. Mann Teknik AB reserves the right to make changes at any time in prices, materials, specifications and models and to discontinue models without notice or obligations.