

Series 1 FRLs

R43-Series Water Pressure Regulators

Application

- Used in water systems to reduce and maintain pressure at a nearly constant level despite changes in the inlet pressure and changes in downstream flow requirements

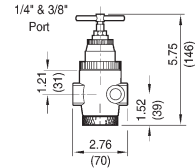
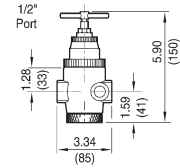
Features

- T-handle adjustment
- Brass body and aluminum bonnet
- Non-relieving type
- Gauge port is full-flow and can be used as an outlet port
- Supplied with GC230 gauge

Specifications

- Pressure range: **5-125 PSI**
- Inlet pressure: **400 PSI**
- Temperature range:
 - water service: **35° to 200°F (2°C to 93°C)**
 - air service: **-30° to 200°F (-34°C to 93°C)**

Port Size	Flow (GPM)	with Gauge Part #
1/4"	5	R43-201RG
3/8"	5	R43-301RG
1/2"	10	R43-406RG



11-009-Series Water Regulators

Application

- Balanced valve minimizes effects of the inlet pressure variations on outlet pressure

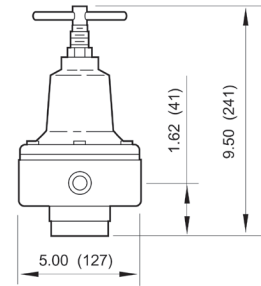
Features

- T-handle adjustment
- Non-relieving type
- Body, valve, and bottom plug are brass; bonnet is aluminum and steel
- Elastomers are nitrile

Specifications

- Inlet pressure: **400 PSI**
- Temperature range:
 - water service: **35° to 200°F (2° to 93°C)**
 - air service: **-30° to 200°F (-34° to 93°C)**
- Pressure range: **5-125 PSIG**

Port Size	Flow (GPM)	without Gauge Part #
3/4"	27.5	11-009-065
1"	27.5	11-009-081



B72-Series Sub-Compact Filter / Regulators

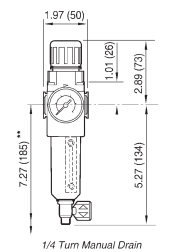
Features

- Particle removal per ISO 8573-1, Class 5, and Class 3
- In-line or modular installation
- 40 micron element
- 2 oz. reservoir
- Quick-release bayonet bowl
- Prismatic lens liquid level indicator
- Supplied with GC620 gauge

Specifications

- Pressure range: **5-150 PSI**
- Inlet pressure:
 - transparent bowl: max pressure **150 PSIG (10 bar)** and temperature range **-30°F to 125°F (-34°C to 50°C)**
 - metal bowl: max pressure **250 PSIG (17 bar)** and temperature range **-30°F to 150°F (-34°C to 66°C)**

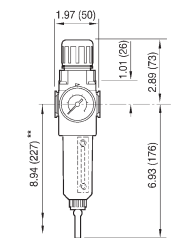
Transparent Bowl			
Port Size	Flow (SCFM)	Semi-Automatic Drain Part #	Manual Drain Part #
1/4"	80	B72G-2AG	B72G-2MG



** minimum clearance required to remove bowl

with transparent bowl

Metal Bowl and Sight Glass			
Port Size	Flow (SCFM)	Semi-Automatic Drain Part #	Manual Drain Part #
1/4"	80	B72G-2AG-MB	B72G-2MG-MB
3/8"		B72G-3AG-MB	B72G-3MG-MB



** minimum clearance required to remove bowl



with metal bowl

NOTE: SCFM ratings given at 150 PSIG inlet pressure
FRLs are designed for air service only, unless otherwise indicated.
See pages 343-348 for accessories.

